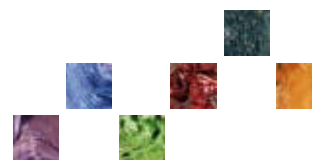


LEAH POLLER

Sculptor



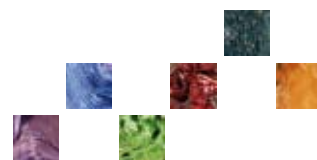
EXHIBITIONS

ONE PERSON EXHIBITIONS

- 2010 "Bank on Bed, Part IV" Capital One Bank, One Penn Plaza, New York City
- 2009 "Under The Mattress" in collaboration with Milan Luxury Linens, New York City
"Under The Mattress" in collaboration with Bellino Fine Linens, New York City
- 2008 "Bank on Beds, Part III" Capital One Bank, One Penn Plaza, NY
- 2007 "101 Beds...A Dream in Bronze ," Galeria Vertice, Guadalajara, Mexico
"Suenos y Poesia ," Centro Cultural San Angel, Mexico City - Museo Casa Diego Rivera, Guanajuato
Centro Comunidad Sefaradi, Mexico City, Mexico
- 2005 Museo Regional de Michoacan, Morelia, Mexico
- 2004 Galeria del Anticuariato, Morelia, Mexico
Instituto Nacional de Antropologia e Historia (CONACULTAH-INAH), Morelia, Mexico
Soaring Beds – Traveling Exhibition
From Head to Bed – YIN YANG Multi Sensorial Social Laboratory, New York
- 2003 Bank on Beds - Part II, Fleet Bank, Empire State Building, NYC, Sponsored by Soaringwords.org
"Realities VII, Arnot Museum, Elmira, NY
"Ciento - y - una camas ," National Museum of Morelia, Mexico
"Dream Awake ," The Association for Spirituality and Psychotherapy, Fordham University, NY
"Bed and beyond ," Kismet Gallery, NY
"Manhattan to Mexico...and back ," the Mexican Cultural Institute of New York
- 2002 "101 Beds ," Galleria Dante, Puerto Vallarta, Mexico
- 2001 "Leah Poller- 101 Beds"
Edward Dean Museum, Palm Springs, California
- 2000 "Leah Poller – 101 Beds ," Mercedes Benz Manhattan, NY
"Sculpture Showcase ," Naples, Florida
"101 Lits ," Galerie Treger, Paris France
"101 Beds ," Fleet Bank, Empire State Building, New York
- 1999 "101 Bed Collection ," Park Avenue Atrium, NY
"Leah Poller's Beds ," Portals Gallery, Chicago, and:"SOFA ," Chicago
"Leah Poller et 101 Lits". Ofivalmo, Paris, France
- 1998 "101 Bed Collection ," Washington Square Windows, New York, New York

LEAH POLLER

Sculptor



- 1997 "The first 50/101 Bed Collection ," Freitas Revilla Gallery, Boca Raton, Florida
"Leah Poller - Bedtime" Marathon Gallery, Tucson, Arizona
"Leah Poller ," Portals Gallery, Chicago, Illinois
"Leah Poller" Dorog Gallery, Los Angeles, California

TWO PERSON EXHIBITIONS

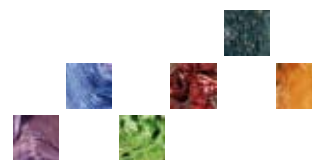
- 1999 "The One Hundred and One Beds ," Sculptor's Showcase, New Hope, PA
- 1995 "Joy of Color and Palette of Beds ," Leah Poller and Sara Bachrodt, Joel Kessler Fine Art, Miami Beach, Florida

GROUP EXHIBITIONS

- 2010 "The Great Nude Invitational" New York City
- 2009 " On Aggression " Philoctetes Center for the Multidisciplinary Study of Imagination New York City
- 2008 "Senderos Mexicanos Part VI ," Museo Regional de Michoacan, Morelia, México and Centro Cultural San Angel, Mexico City
- 2007 "Senderos Mexicanos, Part V," Museo Regional de Michoacan, Morelia
Centro Cultural San Angel, Mexico City
"Reminiscence ," Grounds for Sculpture – The Johnson and Johnson Foundation, Harrison, NJ
"Tossed and Found ," Stanford Connecticut Business District 14th Annual Sculpture Walk
- 2006 Association for Spirituality and Psychotherapy, Fordham University, NYC
Senderos Mexicanos, Part IV, Museo Regional de Michoacan, Morelia
- 2005 Senderos Mexicanos y Vuelta, Museo Regionale de Michoacan
- 2004 Art Miami (Artempresa, Cordova, Argentina)
"Rhumbos de Nueva York ," Regional Museum, Conaculta, Morelia, Mexico
SOFA, New York (ArtEmpresa)
- 2003 "Realities VII"– Arnot Museum, Elmira, NY
- 2001 "Earthline/Landscape ," Gallery of South Orange, NJ
"Poller" , Duveen Fine Arts, Naples, Florida
- 1997 "Tools as Art II: Exploring Metaphor," National Building Museum, Hechinger Collection, Washington, D.C.
"Tools as Art III: All Saws," National Building Museum, Washington, DC
Raleigh Reisen Fine Art, Boca Raton, Florida
Hechinger Collection, Washington, D.C.
SOFA (Sculpture, Objects and Fine Art), Miami, Florida
- 1996 "The Bed Collection ," Marathon Gallery, Tucson, Arizona

LEAH POLLER

Sculptor



The Portals Gallery/Miami International Art Fair, Miami, Florida
"Realities II," Art Alliance, New York, New York

1995 The Portals Gallery/Art Miami International Art Fair, Miami, Florida
The Portals Gallery/SOFA, Chicago, Illinois
Raleigh Reisen Fine Art, Boca Raton, Florida

AWARDS

- › Soho International 92, Montserrat Gallery, Soho New York, Certificate of Excellence
- › C. Lorrillard Wolfe Art Club 96th Annual Competition, New York
- › "Washington Sculpture Group" at Washington Square, juried by Jeremy Strick, Curator, National Gallery of the Smithsonian Institution, Washington, DC
- › "Beyond the Boundaries" National Annual Exhibition, W.C.A, Seattle, Washington
- › Pen and Brush 45th National Competition, New York, New York
- › Open Studio - Washington Project for the Arts, Washington, DC
- › Annual Juried Fine Arts Exhibition, Greater Reston Arts Center, Reston, Virginia
- › Pen and Brush, 45th National Competition, New York, New York
Honorable Mention for the sculpture "No - The Gas Mask"
- › Foothills Gallery North American Competition Foothills, Colorado
Silver Medallion for "On Her Mind" (12/40/2000)
- › Montserrat Gallery, Certificate of Excellence (3 works)
- › South Bend Indiana Art Museum, South Bend, Indiana,
Honorable Mention for "In a Leap from her Bed"

PRIZES

- › 46th Annual Sculpture Exhibition, Pen and Brush, New York
- › "Arts Alive," National Artists Equity, Bethesda, Maryland
- › "The Open Show," Washington Project for the Arts, Wash., DC
- › "Her Art Works," juried by Linda Bengalis, South Bend, Indiana, Art Museum (40/2000 entries)

AFFILIATIONS

- › Association for International Artists
- › National Artists Equity
- › Women's Caucus for the Arts
- › Washington Sculpture Guild
- › Association des Sculpteurs (France)
- › Friends of the Museum of the Americas
- › Pen and Brush (New York)
- › Who's Who of American Women
- › Candy Shop (www. interactive artists web site)

LEAH POLLER

Sculptor



PRESS

- › "Appreciation of Leah Poller and her Beds ," by Cliff Johns, The Potomac, 2003
- › "La Provincia ," Mexico, 2003
- › "Acento ," La Voz de Michoacan, Morelia, Mexico, 2003
- › "Semana de la Cultura ," La Voz, Michoacan, Mexico, 2003
- › "Leah's Beds ," by Cate McClare, Boca Sentinal, 1998
- › "Global Frontrunners" Profile Magazine, 1997
- › "Casting Your Bed in Bronze ," The Artist's Magazine, April 1997
- › "Exhibit celebrates surrealist's fascination with Bedfellows ," Spotlight Chicago, 1995
- › "Bed Puns ," by Fred Camper, Chicago Reader, 1995
- › "Leah Poller ," by Maurice Calka, Prix de Rome
- › "A Question of Culture ," Eyewash, Washington DC, 1990
- › "The Symbolic Bed ," by Mitchell Snow, Washington DC, 1990
- › "Kudos ," Off the Record, Chicago Sentinel, 1995
- › "Leah Poller ," Who's Who of American Women, 1997-1999

BOOKS

"Camas de Epesura y Jade ," poetry by Neftali Coria, images by Leah Poller
"La Cama ," poetry by Anna Caterina Rubia, images by Leah Poller

INTERVIEWS

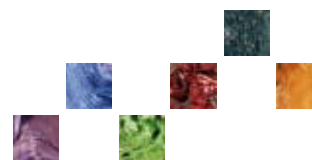
Entrends, 2001 - Fox Cable News - CNN - KOAN, Washington, DC - The Janice Malone Show - Prodigy - Internet Innocent's Abroad - PBS International - Radio Michoacan

EDUCATION

Ecole Nationale Superieure des Beaux Arts, Paris, France

LEAH POLLER

Sculptor



Profile of an artist

SEDUCTION, AS AN ART FORM, OFTEN LEADS TO BED...

Leah Poller recently exhibited her sculptures at the National Museum of Morelia, Mexico. The “101 Beds” exhibition provided an intriguing look into the witty and poetic mind of the artist, provoking extensive articles and a book of poetry on her work. The accompanying catalogue was a modest tribute to her talents, which need to be experienced up close and reveal every viewer’s unique relationship with the bed...

Many may view the idea of picking up and moving to a foreign country as crazy, but Leah Poller successfully managed to do the unthinkable twenty years ago... with three children in tow. Paris was to be her training ground for more than life’s challenges. In fact, a life long dream to study sculpture at the famed Ecole Nationale Supérieure des Beaux Arts was a passionate pursuit that had finally come true. While at the school, she became friends with some of twentieth century’s finest talents. Her world had become limitless. Her determination to become an artist of merit and to devote her life to experiencing art and the way of the senses begins her story.

Having been a successful business woman in the United States, Poller prepared herself for her next role in the Paris mainstream. Knowing that her own work would grow and evolve over time, she set out to carve a position of reckoning in the fiercely competitive field of art dealership. She promoted the work of fellow artists, helping to raise awareness of their talent and forging commercially viable strategies for their financial successes in the art field, all the while finding time to pursue her own craft, winning awards, educating three children, and supporting the burgeoning film careers of her two youngest daughters. It had become apparent that her life would never be mundane, or without purpose and constant challenges.

With all her successes in France, the itch to conquer the US market was becoming more and more essential to her growth as an art professional, art activist and sculptor. In the late 80’s after an initial stay in Washington DC, she moved her activities to New York City’s Soho district and set up shop and studio in the hub of America’s art culture. Her gallery quickly became known for its high quality, eclectic selection, introducing multi-cultural talents never before seen in the US.

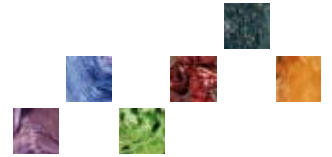
An accident in her studio, however, brought her exuberant spirit to a momentary halt! Doctor’s orders relegated her to bed for as long as her body needed to heal. This twist of fate propelled the conception and materialization of The 101 Bed Collection, a series of bronze sculptures expressing all the intelligence and visual definition of their narrative counterparts.

Bed of Roses, Ocean Bed, Bed of Nails, Bed Spread, Lobster Bed, Bedrock, Death Bed, Waterbed, all grew out of Poller’s subconscious... and grew and grew to over 100 bed references. The first bed-inspired sculpture was called Paris-Washington in a Bed Hop, and symbolized Poller’s courageous move back to the States after two decades of absence.

Rarely a singular element in contemporary art, the critical success of this body of work came from the public’s fascination with the bed as metaphor for life’s twists and turns. “The truth is, much of

LEAH POLLER

Sculptor



our quality time is spent laughing in, loving in, and sleeping in the BED!" Poller states, and that is why, "the bed is something that every man, woman and child can relate to." Seemingly simple, yet extremely rare to find the personification of the bed taken to such a degree of detail, mastery of medium and execution of concept that Poller has given each and every sculpture that has been "born" into the collection. Using found objects and visual metaphors that inspire a kinship to the immediate past, Poller's work creates a biography of modern humanity and its intimate relationship to this icon.

It is with great pleasure that Leah Poller presents The 101 Bed Collection. Whether viewed in public places (Park Avenue Atrium, Washington Square Windows), museums (The Arnot, The Smithsonian) or in public and private collections (The Hechinger Collection, Mercedes Benz), her work seduces the viewer, titillates the imagination, and provokes instantaneous responses. Under the auspices of the Soaringwords Foundation, a selection from The 101 Bed Collection will begin a three-year national museum tour commencing in NY, as well as personal exhibitions in the US, Mexico, Argentina and Europe throughout 2003-05.